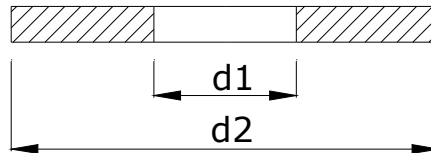




Tabela z wymiarami standardowych uszczelki do kołnierzy zgodnie z :

ASME / ANSI B 16.5



		KLASA [psi]					
			150	300	400	600	900
			1,03 [MPa]	2,07 [MPa]	2,76 [MPa]	4,13 [MPa]	6,21 [MPa]
(DN)	NPS	d1 [mm]	d2 [mm]	d2 [mm]	d2 [mm]	d2 [mm]	d2 [mm]
(15)	½"	21	48	54	54	54	64
(20)	¾"	27	57	67	67	67	70
(25)	1"	33	67	73	73	73	79
(32)	1¼"	42	76	83	83	83	89
(40)	1½"	49	86	95	95	95	99
(50)	2"	60	105	111	111	111	143
(65)	2½"	73	124	130	130	130	165
(80)	3"	89	137	149	149	149	168
-	3½"	102	162	165	162	162	-
(100)	4"	114	175	181	178	194	206
(125)	5"	141	197	216	213	241	248
(150)	6"	168	222	251	248	267	289
(200)	8"	219	279	308	305	321	359
(250)	10"	273	340	362	359	400	435
(300)	12"	324	410	422	419	457	498
(350)	14"	356	451	486	483	492	521
(400)	16"	406	514	540	536	565	575
(450)	18"	457	549	597	594	613	638
(500)	20"	508	607	654	648	683	699
(600)	24"	610	718	775	768	790	838

Legenda :

1 psi = 6,89476 [kPa]

NPS = średnica nominalna w calach

1 cal = 25,4 [mm]